



medical **ECONET**
GERMANY



Palmcare PRO

Accurate pulse oximeter for all age groups

- Color 3" TFT LCD (240 x 400)
- Perfusion Index (PI)
- Four Different screen modes
- Graphical and Tabular Trend
- Including protective case
- Up to 10 hours operation time
- With Alkaline (disposable) or Li-ion (rechargeable) batteries
- PC monitoring S/W (option)
- IV Pole clamp (option)

Specifications

Measurement Range	SpO2	0 - 100 %
	Pulse rate	30 - 250 bpm
	Perfusion Index	0.05 - 20 %
Saturation Accuracy	Adult / Child	70 - 100 % ± 2 digits 50 - 69 % ± 3 digits 0 - 49 % unspecified
	Neonate	70 - 100 % ± 3 digits 50 - 69 % ± 4 digits 0 - 49 % unspecified
Pulse rate Accuracy	30 - 250 bpm ± 3 digits	
Resolution	1 bpm	
Ingress Protection	IPX1	
Electrical (alkline battery type)	Power input	9 Vdc (max.)
	Fuse Rating	5A, 32 VAC / DC
Environment	Storage Temperature	-20°C - 70°C
	Operating Temperature	5°C - 35°C
	Operation Altitude	0 ~ 2.000 m
Physical Characteristics	Weight	273 g
	Dimensions	72 x 154 x 26 mm

Accessories

Standard accessories

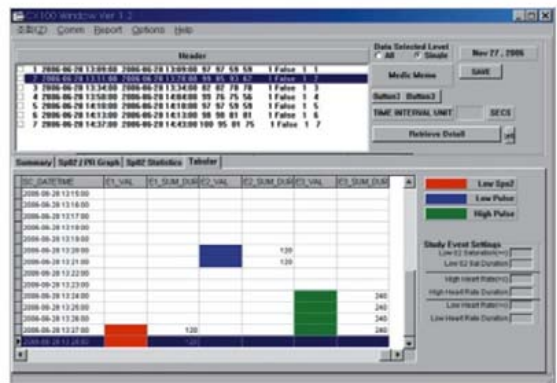
- Palmcare PRO 1ea
- Adult Reusable SpO2 Sensor 1ea
- 4 x AA Alkaline Batteries
- User's Manual 1ea
- Protective cover 1ea



Optional accessories

- SpO2 Sensor (pediatric, neonate)
- SpO2 Extension Cable
- External Mobile Printer
- PC Software
- IV POLE CLAMP

PC Software (optional)



Dimensions

154 (L) x 72 (W) x 26 (H), ca. 273 g



Im Erlengrund 20, 46149 Oberhausen - Germany
 t: +49 (0) 208 377 890-0 info@medical-econet.com
 f: +49 (0) 208 377 890-55 www.medical-econet.com
 facebook.com/medicaleconetgermany
 twitter.com/medicaleconet

Distributor

CE 0123

*All specifications are subject to change without notice